

NEWS RELEASE
January 28, 2008

LORRAINE PROJECT 2007 RESULTS
NEW TARGETS OUTLINED FOR DRILLING

Lorraine Copper Corp. (the “Company”) (TSX-V: LCC) is pleased to announce that the results of the 2007 exploration program on the Lorraine Project, 280 kilometres northwest of Prince George, BC, have been received from Teck Cominco Limited (“Teck Cominco”) (TSX: TCK.B), the project operator. Lorraine Copper Corp. now holds a 100% interest in the Lorraine Project as a result of Plans of Arrangement by Eastfield Resources Ltd. (TSX-V: ETF) and Lysander Minerals Corporation (TSX-V: LYM) whereby the companies merged their interests in the Lorraine property into the Company. Lorraine Copper Corp. is currently awaiting approval from the TSX Venture Exchange for its listing application.

The 2007 exploration program was designed to evaluate a large (12 by 6 km) area that comprises the core of the Duckling Creek Complex and hosts most of the significant mineralized zones in the Lorraine area. A total of 90.6 line-kilometres of IP geophysics were completed and 592 soil samples were collected on the IP lines. The IP survey was designed to “look” down to approximately 450 metres in depth, in order to test for continuity of the mineralized zones along strike and to depth. Soil sampling was directed at filling gaps in the existing database. The geophysical survey was successful in outlining both existing mineralized zones, such as the Bishop Zone, as well as indicating new or extended targets such as an IP anomaly that extends for 2.0 kilometres northwest from the All Alone Dome target. Several IP anomalies appear to be increasing in size and strength to depth, offering new potential for discovering large mineralized zones.

Soil geochemistry indicates a 1.0 kilometre northwest extension to the previously outlined All Alone Dome copper in soil anomaly. The soil sampling program also outlined a new gold-in-soil anomaly that is partly coincident with anomalous copper. This new anomaly is open-ended to the north, measures approximately 1.5 by 1.0 kilometres and is on strike between All Alone Dome and the Boundary zone.

Six widely spaced diamond drill holes, totalling 1,603 metres, were completed in the Slide Zone to follow up on the successful drill testing completed in the 2006 program. Drilling continued to intersect good copper values in this area and intersected multiple bands of mineralization, indicating that further drill testing is warranted. A summary of selected results from this program are outlined in the following table:

Hole No.	From (m)	To (m)	Intercept (m)	Cu (%)	Au (g/t)	Ag (g/t)
JTM-07-11	21.3	37.3	16.0	0.66	0.045	4.2
JTM-07-12	67.9	154.5	86.6	0.35	-	2.1
including	67.9	103.4	35.5	0.67	0.09	4.1
and	133.1	154.5	21.4	0.28	0.07	1.5
	204.5	205.8	1.3	2.39	0.67	14.7
	284.5	327.6	43.1	0.59	0.06	4.7

Hole No.	From (m)	To (m)	Intercept (m)	Cu (%)	Au (g/t)	Ag (g/t)
JTM-07-13	249.2	251.1	1.9	1.51	0.178	7.2
JTM-07-14	56.0	66.0	10.0	0.24	-	1.5
	124.6	126.2	1.6	1.67	0.07	7.2
JTM-07-15	171.3	202.0	30.7	0.61	0.1	3.2
JTM-07-15a	Hole lost: no sampling					

True thicknesses are not known for the drill intercepts shown in the table above and these intercepts are simply core lengths.

To view maps showing the Slide Zone drilling results from 2006 and 2007, the IP anomaly maps and other data for the Lorraine Project, go to our website: www.lorrainecopper.com

Teck Cominco has indicated to the Company that they are planning a significant drilling program for the 2008 season, which is anticipated to begin in late June. Teck Cominco is continuing to model the geophysics and geology to refine drill targets.

The Lorraine Project is being managed by Teck Cominco who holds the property under option. Teck Cominco may earn a 51% interest in the Lorraine Project by spending \$9 million by 2011, and may earn up to a 65% interest by completing a feasibility study and arranging project financing. Teck Cominco has incurred exploration expenditures of over \$3.0 million to date.

G.L. Garratt, P.Geo, who is a qualified person within the context of National Instrument 43-101, has read and takes responsibility for this news release.

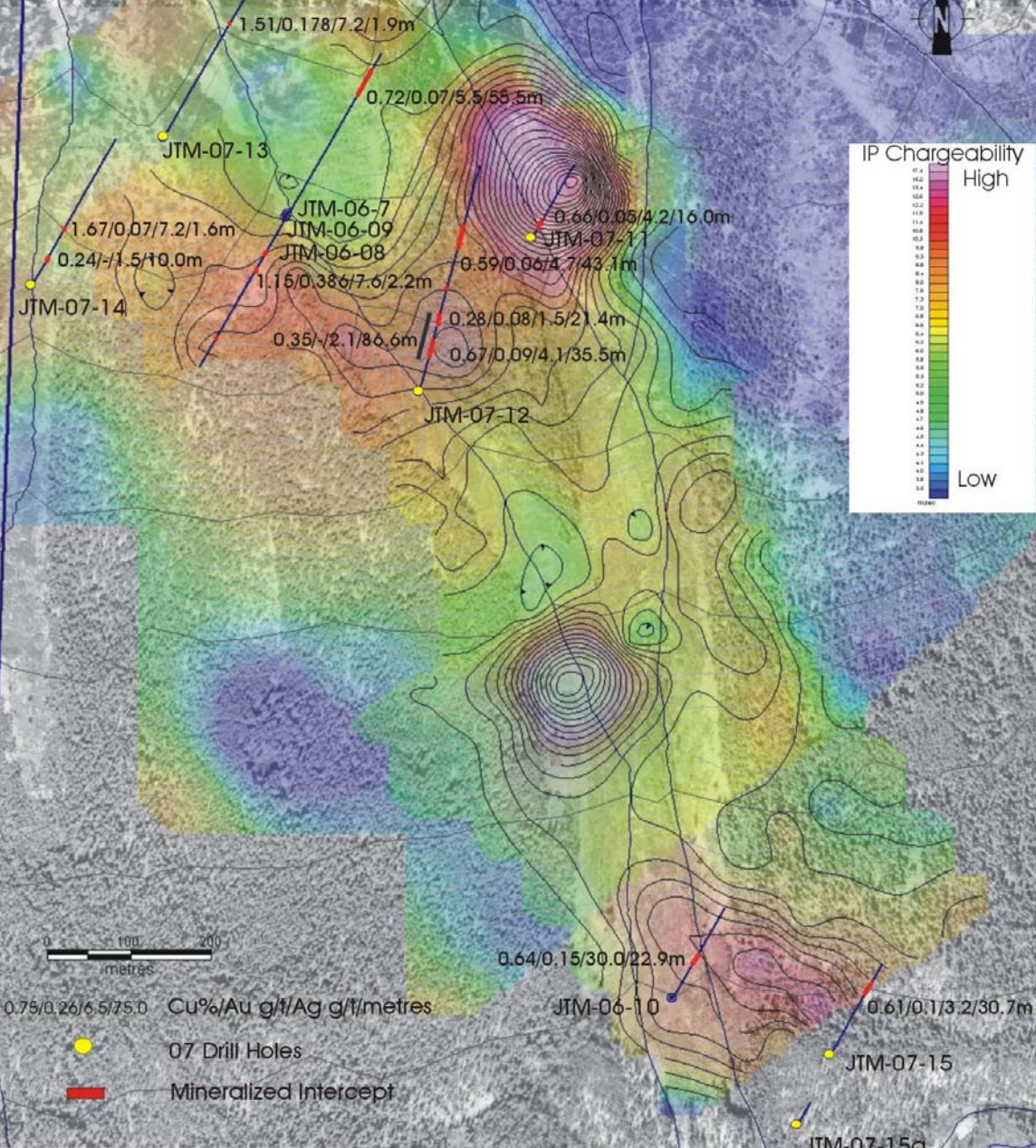
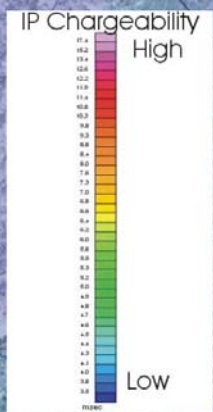
J. W. (Bill) Morton, P.Geo, President

Lorraine Copper Corp.

Contact: Paul Way, Business Development Manager
(604) 681-7913 or Toll Free: 888-656-6611

The TSX - Venture Exchange has not reviewed and does not accept responsibility for the adequacy or accuracy of this release. This news release may contain certain "Forward-Looking Statements" within the meaning of Section 21E of the United States Securities Exchange Act of 1934, as amended. All statements, other than statements of historical fact, included herein are forward-looking statements that involve various risks and uncertainties. There can be no assurance that such statements will prove to be accurate, and actual results and future events could differ materially from those anticipated in such statements. Important factors that could cause actual results to differ materially from the Company's expectations are disclosed in the Company's documents filed from time to time with the TSX - Venture Exchange, the British Columbia Securities Commission and the US Securities and Exchange Commission.

SLIDE TARGET SUMMARY



0.75/0.26/6.5/75.0 Cu%/Au g/t/Ag g/t/metres

● 07 Drill Holes

■ Mineralized Intercept

